

ALDERSHOT & DISTRICT TRACTION CO LTD

The Aldershot & District Traction Co., Ltd. are the only Company authorized by the Traffic Commissioners to run Football Excursions from Aldershot, Farnham, Farnborough and Camberley to away matches of the Aldershot Football Club.

FULL PARTICULARS OF TIMES OF DEPARTURE AND
FARES OF SUCH EXCURSIONS CAN BE OBTAINED
FROM THE COMPANY'S OFFICES AND AGENTS

Seats may be booked at the Company's Offices and Agents. Early Booking is Advised

"BETTER TRAVEL—BY TRACTION"

ALDERSHOT FOOTBALL CLUB LTD.
1957-8



Official Programme

4D



Number 3. SATURDAY, SEPTEMBER 14th, 1957

Removals & Storage



*Large and small consignments
to all counties*

CONSULT—

**ELLIOTTS
OF ALDERSHOT
—LIMITED**

Mr. Fullcare

Tel. ALDERSHOT 185/3

69 GORDON ROAD, ALDERSHOT



SURREY & HANTS NEWS

FIRST WITH THE NEWS
of Home and Away matches

Inside news and views of
Aldershot F.C.

Widest coverage of all local
sport

Every Thursday 3d.

PLACE YOUR ORDER WITH YOUR NEWSAGENT

why not make a weekly date with

ALDERSHOT
THE NEWS
AND MILITARY GAZETTE. FARNBOROUGH CHRONICLE AND FLEET TIMES

—and know what is happening
in all the local sport?

PLACE A REGULAR ORDER NOW WITH YOUR NEWSAGENT
or by post (5d.) from the Wellington Press, Aldershot.

*You are
sure to
SCORE
with Milk
from*

HERE'S TO
LOTS OF
GOALS THIS
SEASON

Watch this space

HOME COUNTIES DAIRIES

Pasteurized, T.T., Channel Island and
Sterilized Milk

Fresh Cream delivered daily and
Full Grocery Service



HOME COUNTIES DAIRIES LTD.
27 WELLINGTON STREET
ALDERSHOT

Telephone : Aldershot 15

TO LET

Colours :
RED AND BLUE SHIRTS, WHITE KNICKERS

Ground and Offices :
RECREATION GROUND, ALDERSHOT

ALDERSHOT FOOTBALL CLUB LTD.

DIRECTORS:

G. H. COOPER, Esq., (Chairman). F. POULTER, Esq.
D. LLEWELLYN GRIFFITHS, Esq., O.B.E.
J. A. B. JAYE, Esq. T. H. DAY, Esq.
S. C. SALTER, Esq.
A. V. BARRACLOUGH, Esq.

Secretary/Manager:
H. EVANS.

Phone :
ALDERSHOT 11

CLUB NEWS AND VIEWS

Good Afternoon, Ladies and Gentlemen.—Our pre-season optimism has received a very severe shock during the past two weeks, and were it not that we firmly believe that the form shown by the team is too bad to be true, we should now be well and truly depressed.

These notes were written prior to the mid-week game with Southend, and at the time of writing, we had played five matches without a single win, one of the worst starts for many seasons, but a more alarming feature of the situation is the dearth of goals; in only one game have goals been scored.

It so often happens that a team can play several games in a row without showing their real ability, it being that they just do not manage to "click"; that seems to be the case with us just now; the team is not fitting in together, in consequence, they show very little constructive work, still less combination, with the result that we are ingloriously propping up the rest of the teams in the Third Division.

With five games played last season we had collected only three points, which wasn't much better, but that is no consolation because we all had hopes of a great improvement, with visions of finishing in the right half of the table. It is too early yet to despair and the disappointing beginning will only spur us on to greater effort. At Reading last Saturday the team showed better form and although they lost by three goals to nil they really did play well enough to deserve a better fate. Reading had that little wisp of fortune that swung the game their way, but in spite of the setback in goals, our lads never gave up trying and fought desperately to retrieve the situation, but from our point of view Dame Fortune was smiling on the wrong team.

Team :—Amos; Jefferson, Jackson; Rainey, Henry, Wetton; Walters, Lacey, Gaynor, Menzies, Tyrer.

At home, the Reserves came unstuck against their First Division opponents Leicester City. Until half-time there was not much to choose between the sides, but after the interval the superior skill and experience of the visitors paid

dividends against our side which included several amateurs who were being "blooded" into Combination football. With Roy Marshall injured we had to field a substitute goalkeeper, who did his best but lacked experience. Our only goal against Leicester's four was scored by Ron Mann from a penalty-kick.

Team :—Burgess (Army); Lawless, Mann; Gibson, Price, Neave; Ford, Gregory, R. Burgess, H. Boon, D. Parnell.

We extend greetings to-day to officials and players of Swindon Town F.C. Our Wiltshire visitors have a partiality for this ground and usually give as good as they get. Last season they drew here 2—2 after we had beaten them 2—1 on their ground for the first time in post-war years. Since 1946/47 the record between the two Clubs is as follows :—

	P.	W.	D.	L.	For	Ag.	Pts.
Home ..	11	3	6	2	15	8	12
Away ..	11	1	2	8	9	27	4

It is always commendable to start at the foot of a ladder and work one's way to the top, but it is doubtful whether such a policy is so commendable with a football team. However, we seem to be following that idea, starting at the bottom of the League after last Saturday's game, we move up one place by virtue of our win at Southend. All we ask of the team now is to maintain the upward climb.

Southend's record this season made our trip to the seaside on Wednesday seem rather a forlorn journey, but the "unpredictables" surprised us all and returned with both points. From all accounts we were a little lucky to win, but the fact is that we took our chances

NEXT HOME MATCH

ALDERSHOT v.

SOUTHEND UTD.

LEAGUE DIVISION III. (SOUTH)

WEDNESDAY, SEPT. 18th

KICK-OFF 5.30 P.M.

Solomon Bros. Ltd.

HOUSE AND CAMP FURNISHERS

Marquees, Awnings and Tents for Hire
Repairing, Re-Polishing & Re-Upholstering
of Furniture . . . Removals and Storage

HIGH ST. & VICTORIA RD., ALDERSHOT
TELEPHONE 333/4

Gifts

in WOOD, CHROME and BRASS-
WARE. COSTUME JEWELLERY.
FANCY STATIONERY and all the
leading FOUNTAIN PENS.

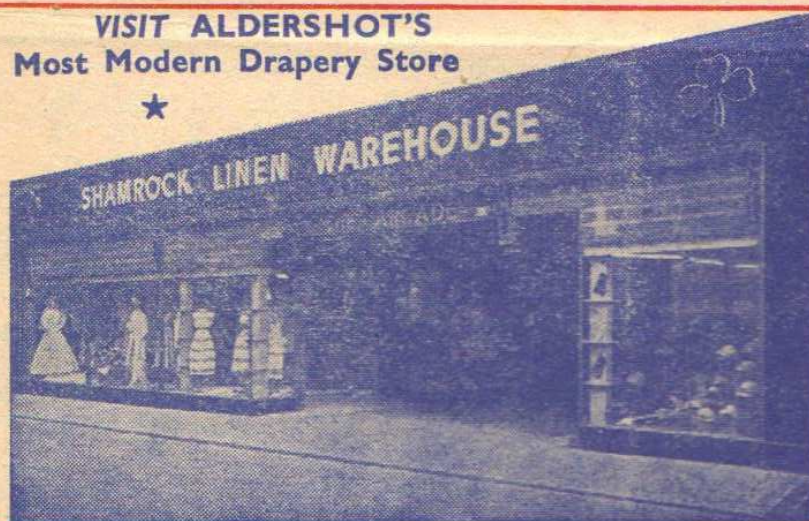
TOGETHER WITH HELPFUL SERVICE

You are always welcome at

EATONS

2, 3 and 4 THE ARCADE, ALDERSHOT

VISIT ALDERSHOT'S
Most Modern Drapery Store



SPARKS ELECTRICAL CO.

ENGINEERS & CONTRACTORS

Installations



Repairs

Telephone: 158

134 VICTORIA ROAD, ALDERSHOT

*3-DAY SERVICE

FREE Estimates, Collection and Delivery
Repairs and Adaptations.

WE HOLD THE LARGEST STOCK
VIEW WITHOUT

FARNHAM CARPET

WEST STREET, FARNHAM

ALDERSHOT v. SWINDON

Right]

ALDERSHOT

JEFFERSON
(2)

LACEY
(4)

WALTERS
(7)

MATTHEWS
(8)

Referee:

W. CLEMENTS
(West Bromwich)

DARGY
(11)

EDWARDS
(10)

CROSS
(6)

NEAL
(3)

Left]

SWINDON (Red S)

FOR GOOD FOOD

THE GEORGE

WELLINGTON STREET

Tel. ALDER

FULLY LICENSED

RESIDENTIAL

RECENTLY MODERNISED

CATERING HOUSE

(Subsidiary Company of Friary, H)

CARPET CLEANING

very. All Carpets Mothproofed
Carpets and Lino laid.

WORKS OF CARPETS IN SURREY
OBLIGATION

T (Cleaning) CO.
M Telephones 4433-4

(Red and Blue)

[Left

OS

JACKSON
(3)

RY

WETTON
(6)

OR

MENZIES
(10)

TYRER
(11)



Linesmen:

N. OLNEY-WILDE (Red Flag)

L. R. ROSEKILLY (Yellow Flag)

KICK-OFF 3 P.M.

WRIGHT

OWEN
(8)

MOORE
(7)

SON

CLAYTON
(4)

RTON

HUNT
(2)

ts, White Shorts)

[Right

AND COMFORT

GE HOTEL

EET, ALDERSHOT

SHOT 159

DENTIAL :: ALL MEALS

AND REDECORATED

USES LIMITED

royd & Healy's Breweries Ltd.)

MOST GOVERNMENT INDUSTRIAL WORKERS
are already members of the

TRANSPORT & GENERAL WORKERS' UNION

If you are employed in one of the local Government
Establishments and have any difficulty concerning joining,
contact the Local Office at

67 GROSVENOR ROAD, ALDERSHOT
Phone 1686

WE ARE ORGANIZED IN ALL LOCAL DEPARTMENTS

K. J. APTHORPE & CO.

Incorporated Auctioneers & Estate Agents

MORTGAGES ARRANGED ON ALL TYPES OF
PROPERTY

ALSO RE-MORTGAGING FACILITIES
VALUATIONS FOR PROBATE. RENTS COLLECTED

12 STATION ROAD, ALDERSHOT
Phone 544/5

Timbercraft

FOR THE BEST

GREENHOUSES, GARDEN SHEDS, GARAGES, POULTRY
APPLIANCES, ETC.

TIMBER, PLYWOOD, HARDBOARD, 'HARDEC' PLASTIC
all cut to size for you

BUILT-IN CUPBOARDS & WARDROBES ARE OUR SPECIALITY

Open from 7 a.m. till 5.30 p.m. Monday to Friday. 7 a.m. to 12 noon Saturday

RING 690 AND WE WILL SEE TO THE REST

'TIMBERCRAFT' WOOD PRODUCTS (Regd.)
EAST STATION ROAD & ST. GEORGE'S ROAD, ALDERSHOT
Phone 690

ALWAYS A GOOD RESULT if you

TRUST ARCHER'S

THE MOTOR SPECIALISTS

VICTORIA ROAD, ALDERSHOT

Phone: 323

FOR ALL YOUR MOTORING REQUIREMENTS & SERVICE

CARS :
AUSTIN, MORRIS
ISETTA

—AGENTS—

MOTOR CYCLES :
Ariel, Matchless, Norton, Triumph
Velocette, James, Norman, Ambassador
Bown, Zundapp

and Southend did not and, if for nothing else, we deserved to win for solid effort and perseverance. Fifteen minutes from the end we were two goals up, scored by **Jimmy Gaynor** and **Norman Menzies**, then Southend scored from a corner and after that there was a battle royal until the final whistle. Our defence held out with grim determination and good goal-keeping by **Keith Amos**.

Team :—Amos ; Jefferson, Jackson ; Lacey, Henry, Wetton ; Walters, Matthews, Gaynor, Menzies, Tyrer.

The return match with Southend will be played next Wednesday, September 18th. Supporters please note that the kick-off is **5.30 p.m.** and not 6 p.m. as advertised.

MANAGER'S COMMENTS

There was more joy in the Aldershot camp on Thursday morning than I have seen all the season, thanks to a hard-worked-for win Wednesday evening at Southend, in which everyone in the team gave all he knew for ninety minutes, and I think they made their own luck ; nobody gave in even during the last ten minutes when Southend had more corners than I would like to mention. That very good centre-forward **Roy Hollis** missed the most glaring of chances when **Gordon Henry** slipped and let him through. After the match my thoughts wandered to the many times that has happened to us at Aldershot, more missed chances than enough. In this game Southend had twice as many chances as us, and believe me, we had our share, but we took two in great style.

How these lads fight away from home. Even at Reading, where we lost 3—0, they did enough to come away with a point ; we were a greatly improved side. Perhaps it is the Aldershot air that doesn't agree with the lads, though the lads have other ideas. We think that a bit more encouragement from the Supporters when things are going wrong would

help, with less barracking the first time a player does anything wrong ; however, you, the Supporters, help to pay our wages and are entitled to act as you please, but I would like you all to give this matter serious thought.

An explanation on the Reserve match against **Leicester City** might not come amiss here, and might pacify the critics deploring the weak team fielded. We had six players injured and on Friday afternoon **Roy Marshall** cried off with a slightly-pulled muscle. I had to chase around and do the best I could to fix up a deputy. It is just one of those things that happen at this time of the year with so much football to be played.

H. A. EVANS.

SUPPORTERS' CLUB NOTES.

I am pleased to tell Supporters that all Members of the Supporters' Club are once again this season covered by our Free Insurance Scheme against any accident to them on the Football Ground or when travelling to away Matches.

Further to my notes regarding Old Age Pensioners, we are increasing the rebate for a trial period of three months. The rebate will be 1/- for 1st Team Matches and 6d. for Reserves. Any O.A.P. holding a Season Ticket can obtain equivalent rebate in bulk for this trial period. This rebate is only applicable to Members of the Supporters' Club. Further particulars can be obtained from **Mr. J. T. Parsons** at the Supporters' Hut.

Members who visited **Bristol City** with us at the end of last season will no doubt remember the grand way they entertained us. I am pleased to say that **Fulham F.C.** Supporters' Club have invited Members to a Social Evening and Dance on 19th October. Watch this space for further details.

"NORRIE."

HALF TIME SCORE BOARD

A BRENTFORD BOURNEMOUTH	F NORTHAMPTON T. READING	M WATFORD SHREWSBURY TOWN
B BRIGHTON & HOVE SOUTHEND	G PLYMOUTH ARGYLE MILLWALL	N MANCHESTER CITY PORTSMOUTH
C COLCHESTER U. NORWICH CITY	H SOUTHAMPTON QUEENS PARK R.	P ARSENAL LEICESTER CITY
D CRYSTAL PALACE COVENTRY CITY	K TORQUAY UNITED WALSALL	R NEWCASTLE U. CHELSEA
E NEWPORT COUNTY EXETER CITY	L PORT VALE GILLINGHAM	S PRESTON N.E. TOTTENHAM H.

FLOWERS for Any Occasion

DELIVERED ANYWHERE BY INTER-FLORA

A Buttonhole to a Bouquet of Choice Cut Flowers

BADHAMS LTD.

THE CORNER HOUSE

Upper Union Street, Aldershot

Telephone 642 (2 lines)

QUALITY is our Watchword

COME TO

BURROWS

for your Cakes and Pastries

72 Grosvenor Rd. & 152 Victoria Rd.

ALDERSHOT

TO LET

LEAGUE TABLE—DIVISION III. (SOUTH)

	P.	W.	D.	L.	Goals		Pts.
					F.	A.	
Brighton & Hove	6	5	1	0	12	6	11
Shrewsbury Town	6	3	3	0	8	3	9
Southend United	6	4	0	2	21	7	8
Southampton	6	3	2	1	14	9	8
Millwall	6	4	0	2	9	6	8
Port Vale	6	3	1	2	8	4	7
Swindon Town	6	2	3	1	7	4	7
Brentford	6	3	1	2	18	11	7
Colchester United	6	3	1	2	12	10	7
Plymouth Argyle	6	3	0	3	10	9	6
Bournemouth	6	3	0	3	9	9	6
Walsall	5	2	2	1	7	8	6
Norwich City	6	2	2	2	9	12	6
Reading	6	2	1	3	9	8	5
Newport County	5	2	1	2	6	9	5
Torquay United	6	2	1	3	5	9	5
Queen's Park Rangers	6	2	1	3	4	10	5
Crystal Palace	6	2	0	4	9	9	4
Watford	6	0	4	2	4	6	4
Exeter City	6	1	2	3	9	15	4
Northampton Town	6	1	2	3	7	12	4
Coventry City	6	1	2	3	6	13	4
ALDERSHOT	6	1	2	3	4	9	4
Gillingham	6	1	0	5	4	13	2

(Up to and including Matches played September 11th, 1957)

FOOTBALL COMBINATION

			For	Agst.
Aug.	24	BRISTOL Rovers	A	0
	31	SOUTHEND U.	H	0
Sept.	4	BRIGHTON	A	2
	7	LEICESTER C.	H	1
	14	WEST HAM U.	A	4
	17	BRISTOL City	A	
	21	SWINDON Town	H	
	25	LUTON TOWN	H	
	28	QUEEN'S Park R.	A	
Oct.	5	BRIGHTON	H	
	12	LEYTON Orient	H	
	19	BRENTFORD	A	
	26	PORTSMOUTH	H	
Nov.	2	READING	A	
	9	WATFORD	H	
	16	COVENTRY City	A	
	23	TOTTENHAM H.	H	
	30	CHARLTON A.	A	
Dec.	7	BOURNEMOUTH	H	
	14	CRYSTAL PAL.	A	
	21	BRISTOL Rovers	H	
	25	MILLWALL	A	
	26	MILLWALL	H	
	28	SOUTHEND U.	A	
Jan.	4	IPSWICH Town	H	
	11	LEICESTER C.	A	
	18	WEST HAM U.	H	
	25	NORWICH City	A	
Feb.	1	SWINDON Town	A	
	8	QUEEN'S Park R.	H	
	15	CARDIFF City	A	
	22	LEYTON Orient	A	
Mar.	1	BRENTFORD	H	
	8	PORTSMOUTH	A	
	15	READING	H	
	22	WATFORD	A	
	29	COVENTRY C.	H	
Apr.	5	TOTTENHAM H.	A	
	7	NORWICH City	H	
	12	CHARLTON Ath.	H	
	19	BOURNEMOUTH	A	
	26	CRYSTAL PAL.	H	

If it's

COAL, ANTHRACITE

or unrationed

COKE, COALITE, OVOIDS

5 Station Road, Aldershot 181

Station Approach, Farnborough 98

(G. HINCHLIFFE & CO. LTD.)

COME TO

HINCHLIFFES

1st TEAM FIXTURES

			For	Agst.
Aug.	24	PORT VALE	H	0
	29	NORTHAMPTON TOWN	A	0
	31	PLYMOUTH ARGYLE	A	2
Sept.	4	NORTHAMPTON TOWN	H	0
	7	READING	A	0
	11	SOUTHEND UNITED	A	2
	14	SWINDON TOWN	H	1
	18	SOUTHEND UNITED	H	
	21	MILLWALL	A	
	25	BRIGHTON	A	
	28	GILLINGHAM	H	
OCT.	2	BRIGHTON	H	
	5	EXETER CITY	A	
	12	WATFORD	A	
	19	CRYSTAL PALACE	H	
	26	TORQUAY UNITED	A	
Nov.	2	BRENTFORD	H	
	9	COLCHESTER UNITED	A	
	16			
	23	BOURNEMOUTH	A	
	30	WALSALL	H	
Dec.	7	COVENTRY CITY	A	
	14	SHREWSBURY TOWN	H	
	21	PORT VALE	A	
	25	SOUTHAMPTON	H	
	26	SOUTHAMPTON	A	
	28	PLYMOUTH ARGYLE	H	
Jan.	4	QUEEN'S PARK RANGERS	A	
	11	READING	H	
	18	SWINDON TOWN	A	
	25	NORWICH CITY	H	
Feb.	1	MILLWALL	H	
	8	GILLINGHAM	A	
	15	EXETER CITY	H	
	22	WATFORD	H	
Mar.	1	CRYSTAL PALACE	A	
	8	TORQUAY UNITED	H	
	15	BRENTFORD	A	
	22	BOURNEMOUTH	H	

			For	Agst.
Mar.	29	SHREWSBURY TOWN	A	
Apr.	4	NEWPORT COUNTY	H	
	5	COLCHESTER UNITED	H	
	7	NEWPORT COUNTY	A	
	12	WALSALL	A	
	19	COVENTRY CITY	H	
	23	QUEEN'S PARK RANGERS	H	
	26	NORWICH CITY	A	

"FRYING TONIGHT

—in Dripping of Course!"

Of course we are. Mr. Maurice Smith, Stunt Sports Writer of "The People" says so, but only to cook the best commodities with the best quality Media.

Rain or Shine, Win or Lose

REEVES FISH CATERERS ALWAYS A CERT
ALDERSHOT AND FLEET

MILLWALL v. ALDERSHOT

Saturday, 21st September

KICK-OFF 3.15 P.M.

EXCURSION TO NEW CROSS

Depart			FROM	Return Fare 2nd Class	MILLWALL F.C. FOOTBALL GROUND IS WITHIN 10 MINUTES WALK OF NEW CROSS STATION
p.m.	p.m.	p.m.			
1224		1254	ALTON ..	8/-	OBTAIN TICKETS IN ADVANCE AT STATIONS OR AGENCIES
1230		1 0	BENTLEY ..		
1237	1255	1 7	FARNHAM ..		IN THE EVENT OF THE MATCH BEING POSTPONED, THESE ARRANGEMENTS WILL NOT BE CARRIED OUT
1244	1 4	1 14	ALDERSHOT ..		
1249	1 10	1 19	ASH VALE ..		
Arrive			AT	Children 3 and under 14 Half Fare	
p.m.	p.m.	p.m.			
1 45	1 57	2 12	WATERLOO		

RETURN BY ANY TRAIN THE SAME DAY.

FREQUENT SERVICE OF ELECTRIC TRAINS BETWEEN WATERLOO (Eastern) AND NEW CROSS—11 minute journey.

NOTICE AS TO CONDITIONS. These tickets are issued subject to the British Transport Commission's published Regulations and Conditions applicable to British Railways exhibited at their Stations or obtainable, free of charge, at Station Booking Offices

BRITISH RAILWAYS